

**INVITATION TO FIS NORDIC COMBINED
CONTINENTAL CUP FOR WOMEN AND MEN
IN LILLEHAMMER (NOR)**

Dear Ski Friends!

We hereby invite all members of the International Ski Federation to participate in the FIS Continental Cup for women and men in Lillehammer 8th-9th December 2023.

We look forward to seeing all of you in Lillehammer!

Kind Regards,
Lillehammer Olympiapark AS
Organising Committee COC

Venues:

SJ: Lyngådsbakkene Ski Jumping Arena

CC: Birkebeineren Ski Stadium



FIS Officials

FIS COC Coordinator
FIS Technical Delegate
FIS Technical Delegate Ass.
FIS Equipment Control

Michael Neumayer
Torben Hirsch (GER)
Marit Stub Nybelius (SWE)
Anja Tepes

Judges

Wolfgang Perktold (AUT)
Geir Steinar Loeng (NOR)
Jarle Solbu (NOR)
Jørn Larsen (NOR)
Tom Normann (NOR)

OC contacts

Position	Name	Phone	Email
Chief of OC	Roar Olsen	+47 91170733	roar.olsen@olympiaparken.no
Chief of Competition	Sara Nordsveen	+47 95496548	saranordsveen@gmail.com
Venue Manager CC	Tor Skraastad	+47 91308313	tor.birkebeiner.no
Venue Manager SJ	Roar Olsen	+47 91170733	roar.olsen@olympiaparken.no
Chief of media	Stein B. Olsen	+47 97718106	steinb@lillehammer.com
Accommodation	Bente Laugen	+47 48074467	coc-accommodation@olympiaparken.no
Accreditation	Camilla Jordheim	+47 45276647	accreditation@olympiaparken.no
Transportation	Geir Olaf Oterholt	+47 90901015	geir@bluesfest.no
Finances	Silje B. Solbakken	+47 47620321	silje.solbakken@olympiaparken.no
Wax cabins CC	Odd Magne Tuterud	+47 95487518	odd.magne.tuterud@oyer.kommune.no
Wax cabins SJ	Roar Olsen	+47 91170733	roar.olsen@olympiaparken.no
Medical Service	Frøydis Nerموen	+47 99735468	froydis.nermoen@volvat.no

OC Offices

Office:
Race office CC:
Race office SJ:
Event office:

Location:
Birkebeineren Cross Country Stadium
Lysgårdsbakkene Ski Jumping Hill
Birkebeineren Hotel and apartments

All times TBA in the FIS event calendar

Program

Tuesday 05.12 & Wednesday 06.12:

- Open training HS98 / HS140
- Open course CC

Thursday 7th December:

- 12:00: TCM NC M & W (Birkebeineren hotel & apartments)
- 13:00: Official training CC
- 16:00: Official training 2 rounds HS98 NC W
- Official training 2 rounds HS98 NC M
- 18:30: PCR HS98 NC W
- 19:15: PCR HS 98 NC M

Friday 8th December

- 09:00: Trial round HS98 NC W
- Trial round HS98 NC M
- 10:15: Competition HS98 NC W
- Competition HS98 NC M
- 14:00: Gundersen 5 km NC W
- 14:45: Gundersen 10 km NC M

Saturday 9th December:

- 09:00: Trial Round HS98 NC W
- Trial Round HS98 NC M
- 10:15: Competition HS98 NC W
- 11:00: Competition HS98 NC M
- 14:00: Gundersen 5 km NC W
- 14:45: Gundersen 10 km NC M

Accreditation

The accreditation cards will be handed out at the event office at Birkebeineren Hotel & Apartments. Please note that the accreditations will be approved according to the registrations in the FIS Entry. Those who have the FIS season accreditation can use this instead of the local accreditation.

Those who don't register through the FIS online entry system need to apply for accreditation. For the application form or other questions regarding accreditation please contact accreditation@olympiaparken.no

Accommodation:

The OC offers the following accommodation (full board included) for athletes and staff:
Three star hotel [Birkebeineren Hotel & Apartments](#):



Address: Birkebeinervegen 24, 2618 Lillehammer

Please note that this hotel also offers apartments.

Prices and rules:

- Booking according to the FIS Rules via FIS Online registration system: https://www.fis-ski.com/DB/?authentication_page=signin
- The price for accommodation outside of the quota or for additional nights is CHF 125 per person in a double room or apartment (minimum number of persons occurs).
- The price for additional single rooms is CHF 160.
- In cases where single room is not necessary because of gender, role, number of athletes and staff inside the quota, the cost difference between single and double rooms must be paid.

FIS Entry deadlines:

Preliminary entries: 27/10/2023

Entries: 30/11/2023

Cancellation rules and fees:

Please see FIS Nordic Combined Continental Cup Rules 6.1.2

Cancellation fee between 8 days and until the end of the events: 100% cancellation fee.

For cancellations of more than what is stated in the rules above the OC will charge a 100% cancellation fee.

Reimbursement for FIS Officials

Carrying costs/Reimbursement:

Expenses sheets must be sent to silje.solbakken@olympiaparken.no. Payments will be done by bank transfer.

Payment

- Accommodation costs above quota and transport: Teams will pay directly in the event office at Birkebeineren Hotel. Only credit cards will be accepted.
- In case you are not able to pay by card, please send us your invoice information in advance.

Prize money

Prize Money will be paid by bank transfer to the athletes after the FIS Continental Cup Lillehammer. The prize money is regulated by the FIS Rules for Continental Cup. Receipts will be provided to the athlete electronically and a copy transmitted to FIS.

Remember to upload bank info using the FIS Athlete Registration module in the FIS member section.

Responsible for prize money: hedda.hoel@skiforbundet.no

Income tax information for prize money

- Income tax of European citizens is 15%
- Income tax of non-European citizens is 15% (USA 0%)
Tax will be deducted by the OC according to the Norwegian Foreign Artist Taxation Act, and taxes will be paid by the OC according to the regular tax legislation in Norway.

Official transport and shuttle

Official transport:

- Official airport: Oslo Airport Gardermoen
- There will not be arranged any official transportation from the airport upon arrival.
- For OC transportation upon departure, please fill in your request through the FIS online

registration system: https://www.fis-ski.com/DB/?authentication_page=signin

- The price for OC bus is CHF35

Alternative transportation (if no OC bus):

- Train: Direct train (approx one departure every hour, except for in the night). Please see the schedule/order here: <https://www.vy.no/en>. Choose Oslo Lufthavn (the airport) to Lillehammer. Alternatively buy the ticket at the airport/station or on board the train.

Shuttle from the train station:

- For transportation from the train station to the venue and the hotel please contact chief of transport Geir Olaf Otherholt

Shuttle to the venues:

- There will be shuttle service between the hotel and the venues. For shuttle times see information at the hotel reception area

Bibs

Bibs for official training and the ski jumping competitions will be distributed one hour before the competition in the Race Office in the Ski Jumping Hill.

Waxing facilities

- The keys to the cabins are available at the wax building office (CC venue) and at the lift station (SJ venue).
- Keys return to the wax building office (CC) / lift station (SJ) on the day of departure.

Training fee

The price for training is 500 NOK per person per day. This can be paid directly in the 936-shop building at the hill.

Competition Rules

The number of participants in the competitions for Continental Cup NC must comply with official FIS competition rules and regulations.

Doping Control

Doping control may be carried out at any FIS competition according to FIS Anti-Doping Rules.

Economy- Insurance

Financial conditions are according to the FIS Rules and regulations.

All competitors must be insured by their own National Ski Association and must have signed the Athletes Declaration. The Organizers have coverage for their own third-party liability only.

Regulations of Visa

- Remember that citizens of some countries will need a visa for visiting Norway. Please check with your embassy if you need a visa for Norway.
- If you need an official letter of invitation from the OC, please send a request to: coc@olympiaparken.no. Be sure to send names and what kind of information you need to get accepted to travel to Norway.

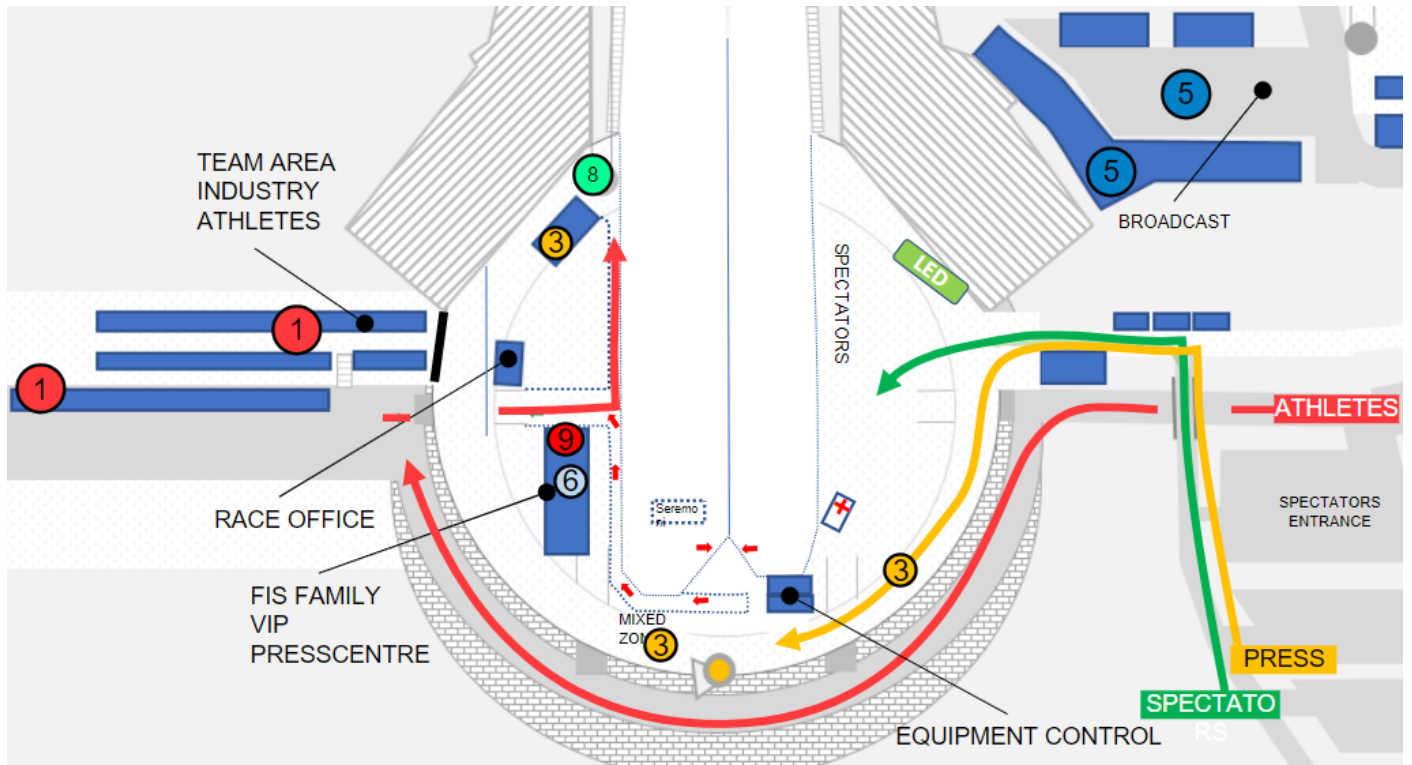
Truck driving and routes

Special permissions for truck driving (Sunday- and night, other days with special regulations)

- There is no need for a special permission for truck driving on Norwegian roads. No special rules and regulations, except for the normal Norwegian weather and snow conditions and the need of snow tires.

Arena Maps

Lysgaardsbakkene Ski Jumping Arena



Birkebeineren Ski Stadium

