



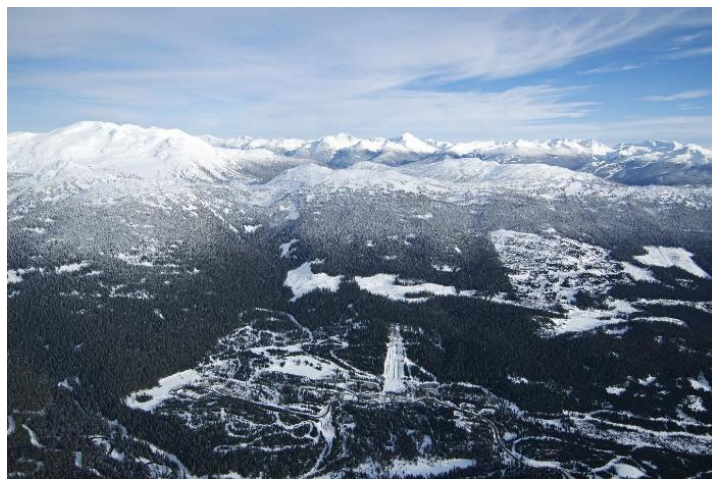
# INVITATION



## WOMEN'S SKI JUMP AND MEN'S/WOMEN'S NORDIC COMBINED CONTINENTAL CUP

WHISTLER OLYMPIC PARK

MARCH 17-19, 2022



**2022 FIS CONTINENTAL CUP**  
SKI JUMP WOMEN + NORDIC COMBINED MEN / WOMEN  
Whistler Olympic Park



Dear Ski friends:

The Black Tusk Nordic Event Society, Nordic Combined Ski Canada and Ski Jumping Canada are proud to welcome you to Squamish and Whistler. All the events will be held at the Whistler Olympic Park, the home of the 2010 Winter Olympic Games and the 2023 FIS World Nordic Junior World Championships.

## ORGANIZING COMMITTEE

Chair: Norman Laube  
Vice-Chair: Reid Carter  
Event Coordinator: John Aalberg  
Ski Jump Sport Coordinator: Rick Smith  
Chief of Competition SJ: Mark Servold  
Chief of Competition NC: Mark Rolseth  
SJ & NC Competition Secretary: Yvonne Smith

## CONTACT INFORMATION:

General email: [info@whistlercontinentalcup2022.ca](mailto:info@whistlercontinentalcup2022.ca)  
Race Office email: [raceoffice@whistlercontinentalcup2022.ca](mailto:raceoffice@whistlercontinentalcup2022.ca)  
Web site: [www.whistlercontinentalcup2022.ca](http://www.whistlercontinentalcup2022.ca)

## FIS OFFICIALS

FIS NC COC coordinator: Michael Neumayer  
FIS SJ Women's COC coordinator: Renata Nadarkiewicz  
FIS NC Technical Delegates: Vladimir Frak (SVK)  
Torben Hirsch (GER)  
SJ Technical Delegates: Dan Matoon (USA)  
Jarrett Moe (USA)  
Judges: Kelly Johansson (CAN)  
Curtis Lyon (CAN)  
Shinya Tanaka (CAN)  
Matt Keuler (USA)  
Blair Tomten (USA)

## ENTRIES

All entries are through the FIS registration system.



## EVENT PROGRAM (Subject to change)

### Thursday March 17

09:00 - 10:30 Official training SJ Women (NH 105)  
11:00 - 13:30 Official training NC Women and Men (NH 105) / Provisional competition round  
14:00 - 16:00 Official training NC W and M (CC 2.5 km)  
TBD Team Captains Meeting (at hotel)

### Fri March 18

09:00 - 11:00 NH 105 SJ Women  
11:45 - 14:00 NH 105 NC W and M  
15:00 - 15:30 NC CC 5k Gundersen format, Women (2 x 2.5 km)  
16:00 - 16:30 NC CC 10k Gundersen format, Men (4 x 2.5 km)  
TBD Team Captains Meeting (at hotel)

### Sat March 19

09:00 - 11:00 NH 105 SJ Women  
11:45 - 14:00 NH 105 NC W and M  
15:00 - 15:20 NC 5k CC Gundersen format, Women (2 x 2.5 km)  
16:00 - 16:30 NC 10k CC Gundersen format, Men (4 x 2.5 km)

### Sun March 20

TBD Departure

\* Cross-Country training is available before March 17<sup>th</sup>. There will be a small training fee.

## COMPETITION OFFICE & ACCREDITATION

Located at the Ski Jump stadium. All team leaders must report to the competition office for check-in and accreditation. Team check-in must be completed before using the competition venue.

## TEAM CHANGING & WAXING ROOMS

A large tent will be used to provide the required changing and waxing rooms for athletes and teams.

## COMPETITION RULES

Normal FIS ICR Rules will apply. Athletes must have a valid FIS License.

## INSURANCE

All competitors must be insured by their own Ski Association.

## DOPING POLICIES

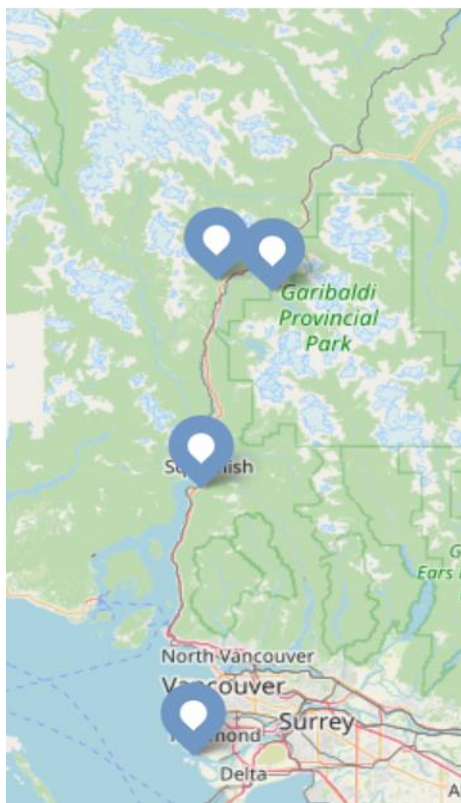
FIS is committed to maintaining the integrity of all ski competitions. In order to prevent the use of forbidden substances or methods, doping controls can be carried out at any FIS sanctioned event.



**2022 FIS CONTINENTAL CUP**  
SKI JUMP WOMEN + NORDIC COMBINED MEN / WOMEN  
Whistler Olympic Park



## ARRIVAL, ACCOMODATION AND TRANSPORTATION



← WHISTLER & WHISTLER OLYMPIC PARK

← SQUAMISH

← YVR AIRPORT

### Distances from Airport:

Squamish: 80 km  
Whistler: 136 km  
Whistler Olympic Park: 134 km

### Distances from venue:

Squamish: 50 km  
Whistler: 25 km

All teams must arrange their own flight to the Vancouver airport (YVR).

The Organizing Committee will arrange and pay for buses which will pick up teams at airport upon arrival and bring to the hotel (cargo vans will be used for equipment).

Buses will transport teams between hotel and venue (venue is 45 minutes from hotel).



**2022 FIS CONTINENTAL CUP**  
SKI JUMP WOMEN + NORDIC COMBINED MEN / WOMEN  
Whistler Olympic Park



NORDIC COMBINED  
SKI CANADA  
COMBINE NORDIQUE

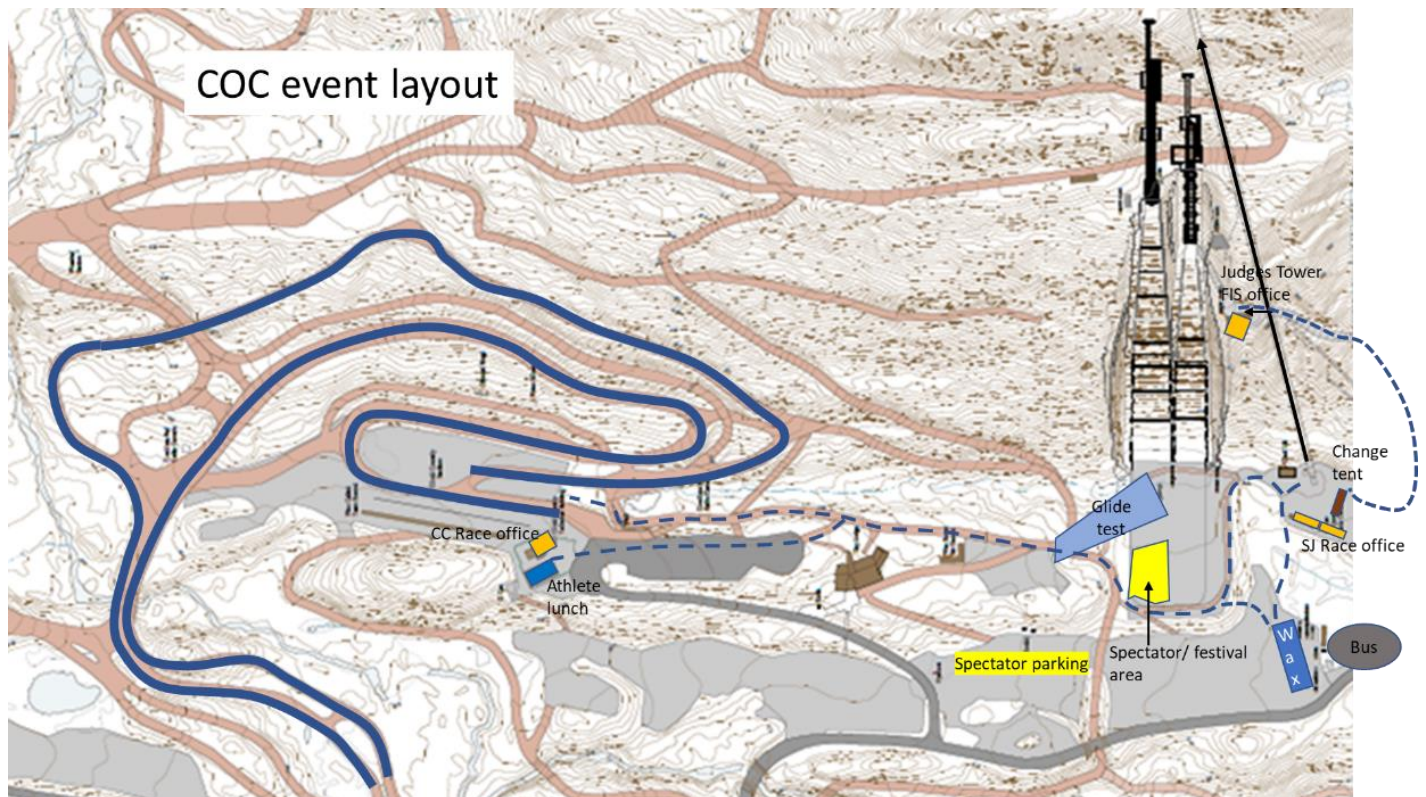


SKI JUMPING  
CANADA  
SAUT À SKI

All teams will stay at the Sandman hotel ([www.sandmanhotels.com/squamish](http://www.sandmanhotels.com/squamish)) in Squamish (1 hr 30 min from airport).

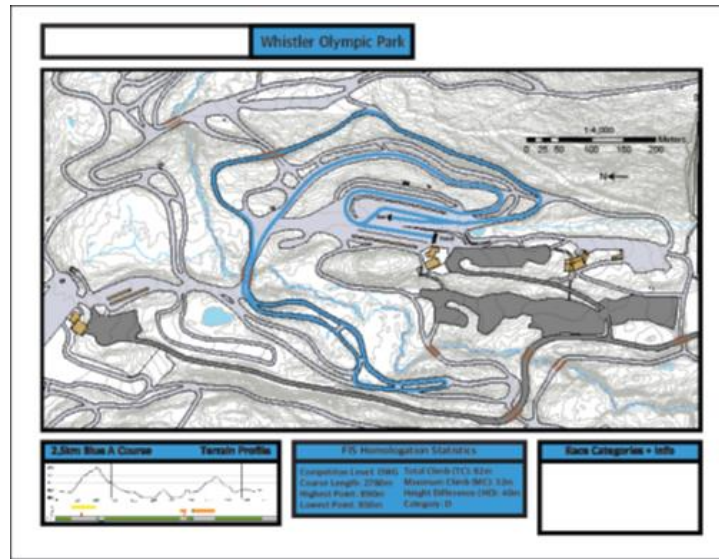


## Whistler Olympic Park



**2022 FIS CONTINENTAL CUP**  
SKI JUMP WOMEN + NORDIC COMBINED MEN / WOMEN  
Whistler Olympic Park





## COVID 19 SAFETY PLANS

We are committed to hosting safe and responsible events. Due to the dynamic and changing nature of the COVID 19 response, this Safety Plan is subject to change as required by Public Health Orders and directions from National and Provincial Sport Organizations. Please check the event website for any future updates.

To protect the health and safety of athletes, coaches, support staff and race officials, and in recognition of the complexity of competition environments, the OC is implementing full vaccination for all event participants.

Vaccination Requirement:

The OC requires all participants (athletes, coaches, support staff and race officials) to provide:

- Proof of full vaccination (<https://travel.gc.ca/travel-covid/travel-restrictions/covid-vaccinated-travellers-entering-canada>) with the last shot received a minimum of 14 days prior to event start

Additional COVID 19 Information:

- Participants should complete a daily COVID 19 symptom self-check: <https://bc.thrive.health/covid19/en>
- Participants are required to use masks indoors and when in buses/vehicles
- Stay in the hotel and arrange for testing if you have been around someone with COVID-19 or if you experience symptoms such as a cough, fever, breathing difficulties, loss of taste or smell or severe fatigue.
- Participants who test positive for COVID-19 should immediately notify the host Organizing committee, including positive COVID-19 results up to 14 days after the event

Please also reference the FIS COVID-19 Information Hub at <https://www.fis-ski.com/en/inside-fis/covid-19-hub>

*The Organizing Committee will try to arrange for the possibility to take a PCR test at the hotel the day prior to departure.*





# BN3TH



**2022 FIS CONTINENTAL CUP**  
SKI JUMP WOMEN + NORDIC COMBINED MEN / WOMEN  
Whistler Olympic Park

